



Aus Liebe zum Automobil

The new Jetta for Ireland

Volkswagen. You're onto a good thing.
www.volkswagen.ie
At your Volkswagen dealer:

All rights reserved. November 2005.

The new Jetta for Ireland

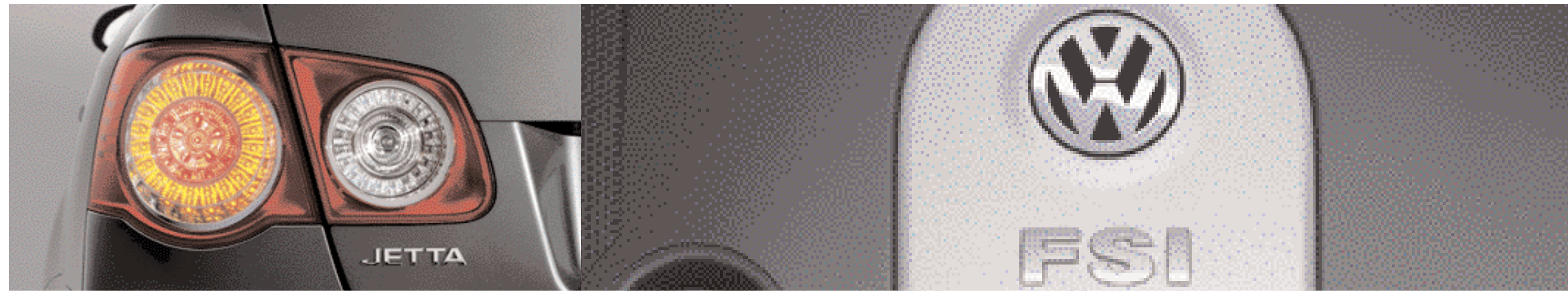




Contents.

4 – 5	Design.
6 – 7	Interior.
8 – 9	The new Jetta.
10 – 11	The new Jetta Comfortline.
12 – 13	The new Jetta Sportline.
14 – 15	Safety.
16 – 17	Engines.
18 – 20	Optional equipment.
21	Alloy wheels.
22 – 27	Colours and upholstery.
22	Paint.
24	Upholstery and leather.
26	Combinations.
28 – 29	Standard equipment.
30 – 33	Technical specification.
34 – 35	Volkswagen service.

Model shown is new Jetta Sportline with optional 17" 'Grand Prix' alloy wheels, 'Xenon' headlights and metallic paint.



Design.

Those who place high demands on life require a car that not only looks good, but delivers that little bit extra. With its streamlined silhouette, distinctive design and sporty, yet elegant, appeal, the new Jetta offers all you would expect and more. It combines all the characteristics of a comfortable saloon with superior dynamics and agile roadholding, promising you driving fun at its very highest level.

Stylish design elements such as chrome-plated side window surrounds are standard on both the Comfortline and Sportline, while body-coloured bumpers and bumper strips, door mirrors, door handles, standard on all models, create a contemporary and classy look. The high specification continues with such attention to detail as a chrome pack, comprising chrome gear knob surround, glovebox handle and handbrake button, introducing a level of refinement indicative of Volkswagen's first-rate build quality throughout. With so much on offer, there is only one way to appreciate the exceptional new Jetta. Experience it for yourself.



Model shown is new Jetta Sportline with optional 17" 'Grand Prix' alloy wheels, 'Xenon' headlights and metallic paint.



Interior.

If the exterior of the new Jetta promises, then the interior delivers. With three different trim models to choose from – the Entry model, Comfortline or Sportline – you can opt for the new Jetta that best matches your personal preferences and lifestyle. Each offers an abundance of features and design points, all made from the highest quality materials and providing a level of refinement nothing short of exceptional. From the sheer value for money of the new Jetta Entry model, to the luxury of the Comfortline and the sporty excitement of the Sportline, each is aesthetically designed to meet your exact requirements. With innovative design assured down to the smallest detail, whichever trim level you choose, you know you will have made the right decision.

Considering how much time we spend on the roads today, it makes sense to ensure we travel in maximum comfort. And this is where the new Jetta excels. Cleverly designed and carefully crafted to provide a truly luxurious ride, the new Jetta contains a wealth of features all included to make motoring as stress-free and relaxed as possible.

Interior shown is new Jetta Sportline with optional radio system RCD 500.

The new Jetta.

01

The new Jetta offers a unique design, impressive quality and superb value for money. The list of standard equipment includes 'Climatic' semi-automatic air conditioning, electric front and rear windows, RCD 300 radio/single CD player with eight speakers, exterior temperature display, two front reading lights, two front cup holders, one rear cup holder, storage compartments in front doors for 1.0 litre bottles and electrically heated and adjustable door mirrors. Further comfort is assured with speed-sensitive power-assisted steering, three-spoke steering wheel with height and reach adjustable steering column, durable 'Glow' cloth upholstery and driver's seat height adjustment.

On the exterior the high specification continues with 16 inch steel wheels with 205/55 R16 tyres as standard. There are also body-coloured bumpers with bumper strips, door handles, and door mirrors with integrated indicators. The look is completed with a chrome-plated radiator grille surround.

Safety in the new Jetta is also paramount and this is highlighted with the inclusion as standard of driver's and front passenger's airbags with front passenger's airbag deactivation switch, curtain airbags, front seat side impact airbags and active front head restraints. All new Jettas are also fitted with ABS (Anti-lock Braking System), ASR (Traction Control) and an electronic engine immobiliser.

- 01 Interior of the Entry model** with 'Glow' cloth and optional radio system RCD 500. Ergonomic design ensures that all controls are located for optimum ease of use.
- 02 The rear lights utilise LED technology**, which react faster than conventional bulbs, and provide clearer, brighter light.
- 03 'Climatic' air conditioning** with semi-automatic control produces a pleasant, consistent temperature throughout.
- 04 The convenient folding key** provides remote central locking and automatic boot opening.
- 05 The optional 16" 'Toronto' alloy wheels** with 205/55 R16 tyres provides an exclusive look.
- 06 Front and rear electric windows** make life just a little easier.





The new Jetta Comfortline.

Subtle trim elements in the Comfortline provide a touch of elegance and flair with that extra bit of comfort and luxury. With a front centre armrest with storage compartment and two rear cup holders, cruise control and an RCD 300 radio/single CD player with eight speakers you can be assured you will arrive at your destination calm and relaxed after every journey.

The exterior looks of the new Jetta Comfortline are enhanced by the addition of 16 inch steel wheels and chrome-plated side window surrounds. While inside, front comfort seats with 'Maxima' cloth upholstery including height and lumbar adjustment, three-spoke steering wheel, illuminated vanity mirrors, together with a rear centre armrest give both the driver and passengers added comfort.

However, the long list of standard equipment doesn't end there. Choose the new Jetta Comfortline and you will also get front seat back storage pockets, load-through provision for transporting long items, 'Climatic' air conditioning with semi-automatic control, multifunction computer, front and rear fitted floor mats, front and rear reading lights with chrome surrounds and 'Microtec' decorative inserts in the dash.

- 01 Interior of the Comfortline** with stylish 'Maxima' cloth upholstery and optional radio system RCD 500, telephone preparation and cradle. Attractive 'Microtec' interior trim adds an element of refinement and quality.
- 02 The RCD 300 radio/single CD player** has eight powerful speakers for exceptional sound clarity and boasts numerous easy to use functions.
- 03 The front centre armrest** provides a handy storage compartment as well as two rear cup holders.
- 04 Cruise control**, which is standard on Comfortline only, maintains a constant speed, enabling you to relax, particularly on long journeys.
- 05 The driver's and front passenger's under seat drawers** provide convenient storage space close at hand.
- 06 The optional leather trimmed three-spoke steering wheel, gear knob and handbrake grip** complement the new Jetta's interior.



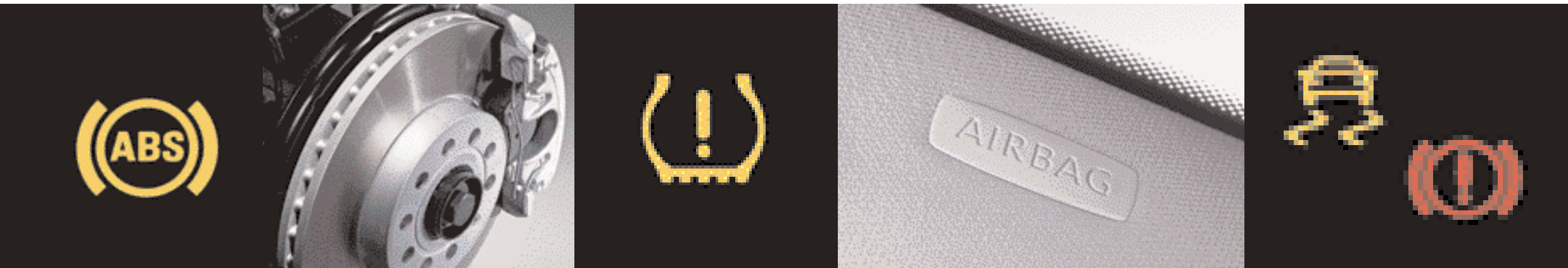
The new Jetta Sportline.

An exceptionally high degree of driving comfort combined with impressive power and agility ensures the new Jetta Sportline delivers pure driving fun, whichever engine specification you choose. It looks particularly sporty with 16 inch 'Atlanta' alloy wheels complete with 205/55 R16 tyres, sports suspension lowered by approximately 15 mm giving maximum grip on the road and front fog lights mounted within the front bumper. Chrome-plated side window surrounds complete the sporty look.

Inside, the new Jetta Sportline offers front sport seats upholstered in 'Brick' cloth with height and lumbar adjustment which offer the driver and front seat passenger optimum lateral support at all times. There are also drawers under the front seats. Also included is an RCD 300 radio/single CD player with eight speakers, multifunction computer, fitted floor mats and a rear centre armrest. The sports look is completed inside with 'Aluminium' inserts in the dash and centre console and a leather trimmed three-spoke steering wheel.

- 01** Sporty 'Brick' cloth upholstery, height and lumbar adjustable front sport seats and leather trimmed three-spoke steering wheel underlines the dynamics of the new Jetta Sportline. Interior shown features the optional radio system RCD 500.
- 02** The gleaming chrome-plated radiator grille reinforces the sport look.
- 03** The leather trimmed gear knob and handbrake grip provide an air of exclusivity.
- 04** The combination of sports suspension, lowered by approximately 15 mm, and 16" 'Atlanta' alloy wheels add to the new Jetta Sportline's character and appeal.
- 05** The front fog lights mounted within the body-coloured bumpers complete the look.





Safety.



Only when you feel safe can you drive confidently. Which is why safety is such a fundamental concept in the new Jetta – and why a whole range of new generation safety features are fitted as standard. Passive safety features include a curtain airbag system for front and rear passengers, front seat side impact airbags, as well as the standard driver's and front passenger's airbags with passenger's airbag deactivation switch. There are also active front head restraints which help to reduce the risk of whiplash injuries in the event of a collision, three rear head restraints and three-point automatic seat belts with front seat belt tensioners and belt force limiters at the front and rear. The front seat belts are also height-adjustable for added safety and comfort. Further active safety features include an Anti-lock Braking System (ABS) and Traction Control (ASR). With everything included to ensure maximum safety for all concerned, all you have to do is sit back, relax and enjoy its many benefits with complete peace of mind. What better incentive could there be for driving the new Jetta?

But irrespective of the equipment selected, one thing is certain – the new Jetta benefits from a powerful engine range allied with a dynamic chassis, offering superb driving potential. The McPherson front axle, with separately mounted dampers and springs, reduces roll to a minimum, while the four-link rear axle, with separately adjustable longitudinal and transverse dynamics, smoothes out any unevenness in the road and ensures stable cornering. The result is that your new Jetta stays safely and comfortably on the road, while you enjoy complete control and a totally exhilarating drive.

Model shown is new Jetta Sportline with optional 17" 'Grand Prix' alloy wheels and metallic paint.

Engines.

The new Jetta has a range of powerful and efficient engines at its disposal with the three petrol variants benefiting from innovative direct injection technology, whereby fuel is injected directly into the combustion chamber under high pressure and the fuel quantity constantly adjusted to the driving condition. The result is impressive power and economy even at low revs. The first engine is a 1.6 litre with a five speed gearbox offering excellent performance delivering 102 bhp. Next is the powerful four cylinder 1.6 litre FSI petrol engine, with a six speed manual gearbox developing a healthy 115 bhp which achieves 39.8 mpg* over the Combined fuel cycle. The most powerful engine available for the new Jetta is the 2.0 litre FSI 200 bhp which accelerates the new Jetta from 0 - 100 km/h in just 7.5 seconds and reaches a top speed of 235 km/h (where the law permits).

Two diesel engines are available and both benefit from 'Pumpe Düse' direct injection technology, resulting in exceptional pulling power throughout the rev range alongside low fuel consumption. You can choose from either the 1.9 litre TDI engine with a choice of either a five speed manual or six speed auto gearbox, developing 105 bhp or the 2.0 litre TDI, with a six speed manual gearbox offering additional performance and delivering 140 bhp. The 1.9 litre TDI 105 bhp five speed manual returns 53.3 mpg* over the Combined fuel cycle whilst producing CO₂ emissions of only 143 g/km. If it's performance you're seeking, the 2.0 litre TDI 140 bhp is sure to impress, with 320 Nm of torque produced at 2,500 rpm and 0 - 100 km/h reached in just 9.7 seconds. Both diesel engines are also Euro 4 compliant.

* Please see pages 30 and 31 for CO₂ emissions and fuel consumption figures.

01 The six speed manual gearbox ensures optimum transmission of power, with short, well-defined gear changes.



02 The blue illuminated instrument panel and multifunction computer keep you updated with a wealth of information all clearly displayed while you drive. The multifunction computer is standard on Comfortline and Sportline models.

03 Highly efficient FSI technology takes the petrol engine to a new level of efficiency, boosting performance while lowering fuel consumption, even at low revs.



Optional equipment.



01 Leather not only looks great, it's durable and easy to maintain. The leather upholstery option features a rear bench seat and split folding rear seat backrest. Optional on Comfortline and Sportline models.



02 Part of the leather upholstery option, the electrically-adjustable heated front seats have five preset temperature settings. Optional on Comfortline and Sportline models.



03 The 2Zone electronic climate control is fully automatic to retain a precise internal temperature. It also benefits from a twin zone setting that allows the driver and front passenger up to 4°C difference in their chosen temperature settings. Optional on all models.



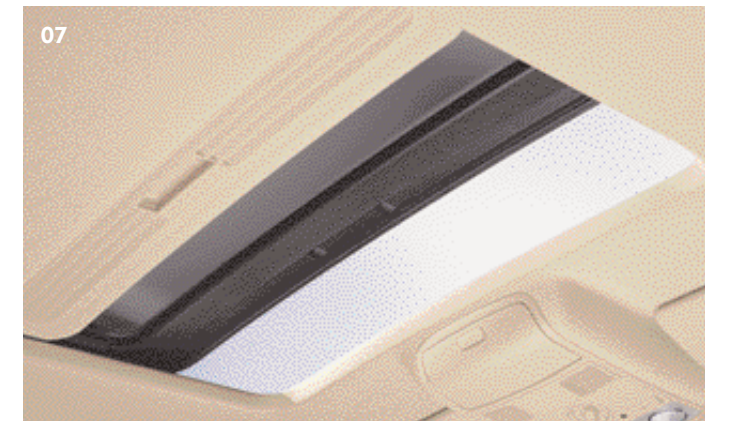
04 Radio system RCD 500 including dash-mounted six CD autochanger with ten speakers – six front and four rear. Optional on all models. Please note: The radio system RCD 500 and navigation/radio systems cannot be specified in conjunction with each other.



05 The DVD navigation/radio system not only delivers perfect sound quality whether you're listening to a CD or the radio, but it can also guide you to your destination in any one of 24 European countries. A 6½" multifunction colour display shows a map of your route along with important information on time and distances. In addition, audible directions can also be broadcast allowing you to concentrate on the road ahead. Optional on Comfortline and Sportline models.



06 Gas discharge (Xenon) dipped beam headlights with automatic range adjustment improve visibility and the headlight washer system ensure they stay free from dirt. Optional on all models.



07 The electric glass sunroof is extremely easy to use. Simply turn the automatic function to your desired setting. It also includes a sunblind for added comfort. Optional on all models.

Also available but not shown:

The rear side airbag system protects the rear passengers in the event of a side collision. Optional on all models.

Heat insulating tinted privacy glass 65% light absorbing from B pillar back reduces the intensity of the sun's rays and heat build-up in the new Jetta's interior. Optional on all models.

Optional equipment (continued).



01-02 The Winter pack offers comfort and safety during the coldest months. The Winter pack includes electrically heated front seats, heated windscreen washer jets, headlight washers and a low washer fluid level warning light. Optional on all models.

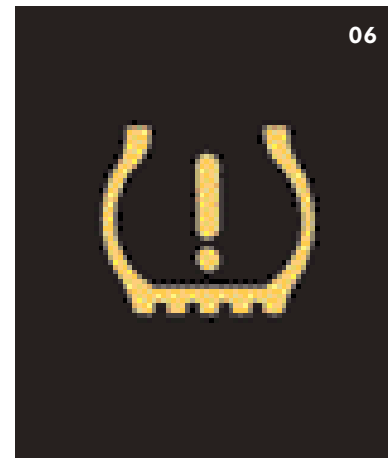
03 Front fog lights are not just for improved safety, they provide a sporty finish. Optional on the Entry model and Comfortline and standard on Sportline models.

Alloy wheels.



01 'Atlanta' design 6½ x 16 alloy wheels with 205/55 R16 tyres and anti-theft wheel bolts. Standard on Sportline models and not available as an option.

02 'Toronto' design 6½ x 16 alloy wheels with 205/55 R16 tyres and anti-theft wheel bolts. Optional on all models.



04-06 The Sensor pack includes ultrasonic front and rear parking sensors which omit an audible warning as objects become closer, cruise control (standard on the Comfortline) which can maintain a constant speed from 20 mph upwards and automatically switches off when the brake or clutch is engaged and an electronic tyre pressure monitoring system which alerts you should a tyre lose pressure. Optional on all models.

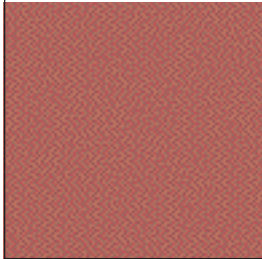
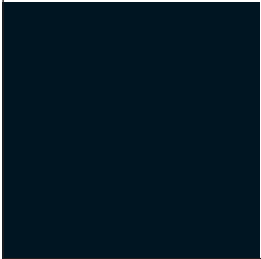

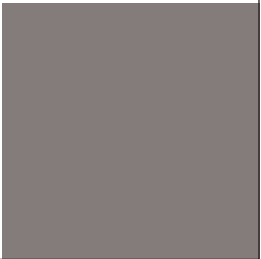
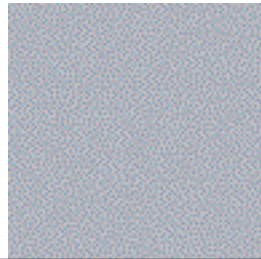
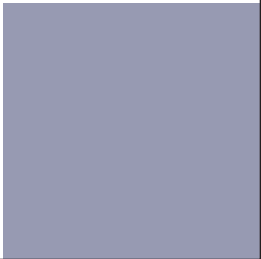
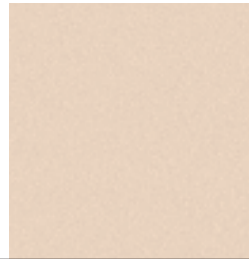

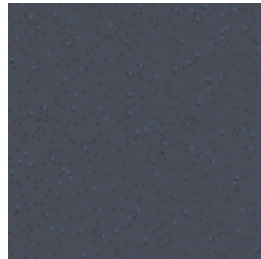


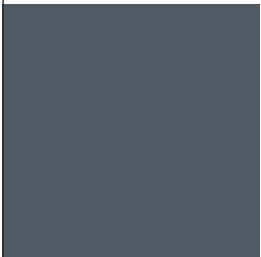


03 'Grand Prix' design 7J x 17 alloy wheels with 225/45 R17 tyres, anti-theft wheel bolts and a steel space saver spare wheel. Optional on all models.

04 'Indianapolis' design 7J x 17 alloy wheels with 225/45 R17 tyres, anti-theft wheel bolts and a steel space saver spare wheel. Optional on all models.

05 'ClassiXs' design 7J x 17 alloy wheels with 225/45 R17 tyres, anti-theft wheel bolts and a steel space saver spare wheel. Optional on all models.

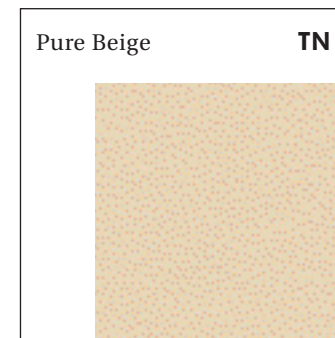
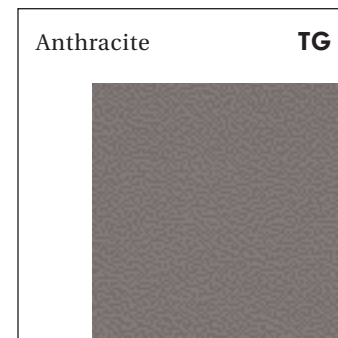
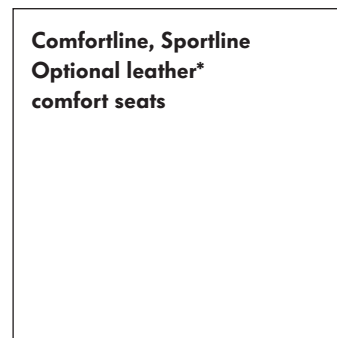
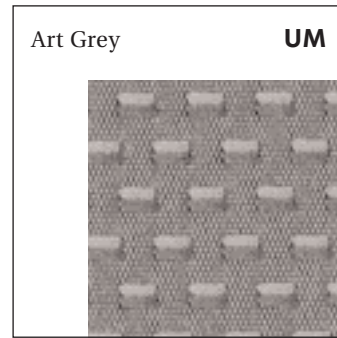
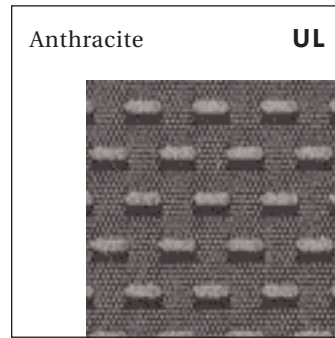
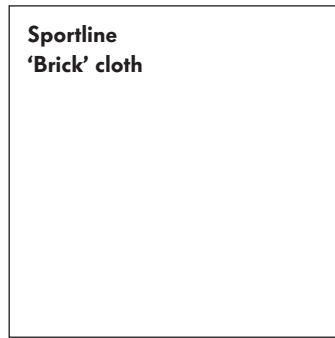
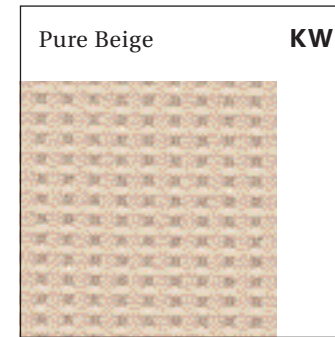
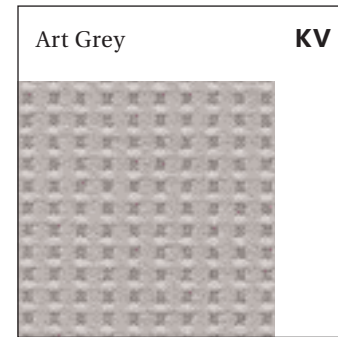
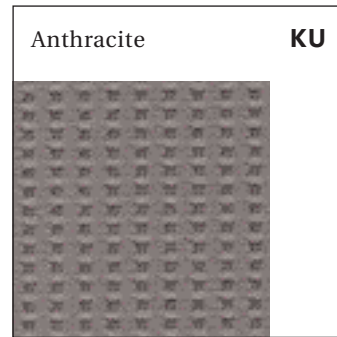
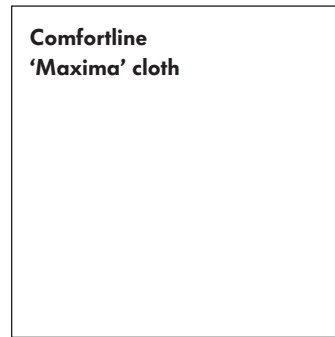
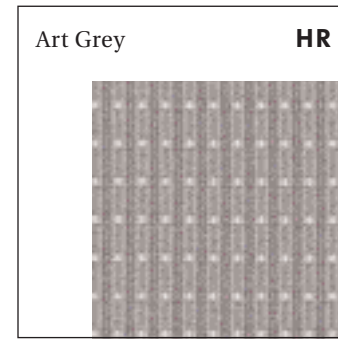
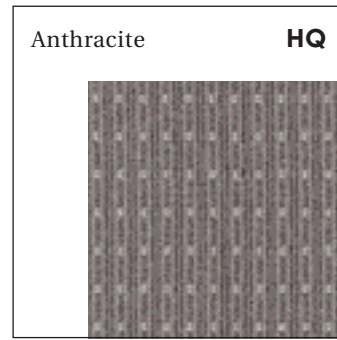
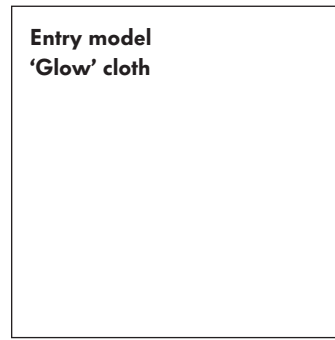
Paint.

Non-Metallic paint	Salsa Red 4Y 	Black A1 	Campanella White R6 	
Metallic paint*	Platinum Grey 2R 	Arctic Blue Silver 7J 	Reflex Silver 8E 	Wheat Beige D1 
	Red Spice K7 	Shadow Blue P6 	North Sea Green Z8 	
Pearl Effect paint*	Deep Black 2T 	Blue Graphite W9 		

Please note: The print process does not allow for exact reproduction of the paint colours. For further details, please contact your Volkswagen dealer.

* Metallic and Pearl Effect paint are optional at extra cost.

Upholstery.



Please note: The print process does not allow for exact reproduction of the upholstery colours.
For further details, please contact your Volkswagen dealer.

* Leather upholstery is optional at extra cost.

Combinations.

Upholstery		Carpet	Dashboard – top/bottom	Salsa Red 4Y	Black A1	Campanella White R6	Platinum Grey Metallic 2R*	Arctic Blue Silver Metallic 7J*	Reflex Silver Metallic 8E*	Wheat Beige Metallic D1*	Red Spice Metallic K7*	Shadow Blue Metallic P6*	North Sea Green Metallic Z8*	Deep Black Pearl Effect 2T*	Blue Graphite Pearl Effect W9*
Entry model															
'Glow' cloth	●														
Anthracite (HQ)		Anthracite	Black/Anthracite	●	●	●	●	●	●	●	●	●	●	●	●
Art Grey (HR)		Art Grey	Black/Art Grey	●	●	●	●	●	●	●	●	●	●	●	●
Comfortline															
'Maxima' cloth	●														
Anthracite (KU)		Anthracite	Black/Anthracite	●	●	●	●	●	●	●	●	●	●	●	●
Art Grey (KV)		Art Grey	Black/Art Grey	●	●	●	●	●	●	●	●	●	●	●	●
Pure Beige (KW)		Pure Beige	Walnut/Pure Beige	●	●	●	●	-	-	●	●	●	●	●	●
Sportline															
'Brick' cloth	●														
Anthracite (UL)		Anthracite	Black/Anthracite	●	●	●	●	●	●	●	●	●	●	●	●
Art Grey (UM)		Art Grey	Black/Art Grey	●	●	●	●	●	●	●	●	●	●	●	●
Comfortline, Sportline															
Optional leather comfort seats*	○														
Anthracite (TG)		Anthracite	Black/Anthracite	○	○	○	○	○	○	○	○	○	○	○	○
Pure Beige (TN)		Pure Beige	Walnut/Pure Beige	○	○	○	○	-	-	○	○	○	○	○	○

* Metallic and Pearl Effect paints and leather upholstery are optional at extra cost.

● Standard ○ Optional - Not available

Standard equipment.

Standard items of equipment Entry level

Volkswagen service

- 2-year/unlimited mileage warranty
 - 3-year paintwork warranty
 - 12-year body protection warranty
 - Volkswagen Assistance
- Please see pages 34 and 35 for more details

Exterior

- Body-coloured bumpers and bumper strips
- Body-coloured door handles
- Body-coloured door mirrors with integrated indicators incorporating LED technology
- Chrome-plated radiator grille surround
- Full size wheel trims
- Galvanised body
- Halogen clear headlights, range adjustable
- Heat insulating tinted glass
- Rear lights incorporating LED technology
- 16" steel wheels with 205/55 R16 tyres

Interior

- Chrome-plated gear knob surround, glovebox handle and handbrake button
- ‘Metallic soft’ decorative inserts in dash and centre console
- Three-spoke steering wheel
- Upholstery – ‘Glow’ cloth

Safety

- ABS (Anti-lock Braking System) with HBA (Hydraulic Brake Assist) and ASR (Traction Control)
- Brake pad wear indicator
- Curtain airbag system, for front and rear passengers
- Disc brakes, front and rear (front ventilated)
- Door side impact protection
- Driver’s and front passenger’s active head restraints
- Driver’s and front passenger’s airbags with passenger’s airbag deactivation switch
- Front seat side impact airbags
- Height-adjustable front three-point seat belts with tensioners

Safety (continued)

- High level 3rd brake light
- Isofix child seat preparation (for 2 rear child seats)
- Rigid safety cell with front and rear crumple zones
- Warning buzzer and light for front seat belts if unfastened
- Warning lights in all doors
- 3 rear head restraints
- 3 rear three-point seat belts

Function

- Air conditioning, ‘Climatic’ semi-automatic control
- Automatic boot opening
- Cup holder, front x 2, rear x 1 (for 1.0 litre bottles)
- Driver’s seat height adjustment
- Dust and pollen filter
- Electric windows, front and rear
- Electrically heated and adjustable door mirrors
- Electronic engine immobiliser
- Exterior temperature gauge
- Full size steel spare wheel
- Glovebox, cooled, lockable and illuminated
- Heated rear window with timer deactivation
- Height and reach adjustable steering wheel
- Instrument lighting, blue adjustable panel illumination
- Interior lighting with delay
- Luggage compartment light
- Non-smoking pack
- Power-assisted steering, speed-sensitive
- RCD 300 radio/single CD player with 8 speakers, 4 front, 4 rear
- Reading lights, front x 2
- Remote central locking with 2 folding keys
- Remote interior fuel flap opener
- Split folding rear seat backrests 60:40
- Storage compartment in roof console
- Storage compartments in front doors (for 1.0 litre bottle)
- Storage tray on dashboard
- Two-tone horn
- Warning ‘lights on’ buzzer
- Windscreen wiper with intermittent wipe and 4 position delay

Standard items of equipment Comfortline (as Entry level including the following)

Exterior

- Chrome-plated side window surrounds

Interior

- Fitted floor mats, front and rear
- Front comfort seats with height and lumbar adjustment
- ‘Microtec Anthracite’ decorative inserts in dash (with pure beige upholstery)
- ‘Microtec’ decorative inserts in dash
- Upholstery – ‘Maxima’ cloth

Function

- Bag hook in luggage compartment
- Cruise control
- Driver’s and front passenger’s under seat drawers
- Front centre armrest with storage compartment and two rear cup holders
- Front seat back storage pockets
- Load-through provision
- Multifunction computer
- Reading lights, chrome surrounds, independent front and rear
- Rear centre armrest
- Vanity mirrors, illuminated
- 12V socket in luggage compartment

Standard items of equipment Sportline (as Entry level including the following)

Exterior

- Alloy wheels, four 6½J x 16 ‘Atlanta’ with 205/55 R16 tyres and anti-theft wheel bolts
- Chrome-plated side window surrounds

Interior

- ‘Aluminium’ decorative inserts in dash
- Fitted floor mats, front and rear
- Front sport seats with height and lumbar adjustment
- Leather trimmed three-spoke steering wheel, gear knob and handbrake grip
- Upholstery – ‘Brick’ cloth

Function

- Driver’s and front passenger’s under seat drawers
- Front centre armrest with storage compartment and two rear cup holders
- Front fog lights
- Front seat back storage pockets
- Multifunction computer
- Rear centre armrest
- Sports suspension, lowered by approx. 15 mm
- Vanity mirrors, illuminated
- 12V socket in luggage compartment

Technical specification.

		1.6 litre 102 bhp	1.6 litre FSI 115 bhp	2.0 litre FSI 200 bhp	1.9 litre TDI 105 bhp	2.0 litre TDI 140 bhp	
Engine	Engine type	Four cylinder petrol	Four cylinder petrol	Four cylinder petrol	Four cylinder diesel	Four cylinder diesel	
	Cubic capacity, ltrs/cc	1.6/1598	1.6/1598	2.0/1984	1.9/1896	2.0/1968	
	Bore/stroke, mm	TBA	76.5/85.9	82.5/92.8	79.5/96.5	81.0/95.5	
	Max. output, bhp/kW at rpm	102/75 TBA	115/85 5000	200/147 5100	105/77 4000	140/103 4000	
	Max. torque, lbs.ft/Nm at rpm	TBA TBA	114/155 4000	207/280 1800-5000	184/250 1900	236/320 1750-2500	
	Compression ratio	TBA	12.0 : 1	10.3 : 1	19.0 : 1	18.5 : 1	
	Gearbox	TBA TBA	Six speed manual –	Six speed manual –	Five speed manual Six speed auto	Six speed manual –	
	Alternator, A – manual gearbox – automatic gearbox	TBA TBA	140 –	140 –	140 TBA	140 –	
	Battery, A (Ah) – manual gearbox – automatic gearbox	TBA TBA	280 (60) –	280 (60) –	330 (61) TBA	330 (61) –	
	Weights, kgs	With manual gearbox: Unladen weight ⁽⁰¹⁾	TBA	1433	1514	1508	1556
Gross vehicle weight		TBA	1870	1950	1940	1990	
Payload ⁽⁰¹⁾		TBA	437	436	432	434	
Axle load limit: Front Rear		TBA TBA	960 960	1040 960	1030 960	1080 960	
With automatic gearbox: Unladen weight ⁽⁰¹⁾		TBA	–	–	1542	–	
Gross vehicle weight		TBA	–	–	1980	–	
Payload ⁽⁰¹⁾		TBA	–	–	438	–	
Axle load limit: Front Rear		TBA TBA	– –	– –	1070 960	– –	
Trailer load limits, kgs⁽⁰²⁾		Braked 12% incline – manual gearbox – automatic gearbox	TBA TBA	1200 –	1400 –	1400 1400	1500 –
		Unbraked	TBA	670	720	720	730
	Towbar load limit	TBA	75	75	75	75	
	Max. roof load	TBA	75	75	75	75	
	Performance	Top speed†, mph (km/h) – manual gearbox – automatic gearbox	TBA TBA	120 (194) –	146 (235) –	117 (189) 116 (187)	129 (207) –
Acceleration, secs 0 - 62 mph – manual gearbox – automatic gearbox		TBA TBA	11.1 –	7.5 –	11.9 11.8	9.7 –	
Environmental information		Fuel grade, minimum	Unleaded, 95 RON ⁽⁰³⁾	Unleaded, 95 RON ⁽⁰³⁾	Unleaded, 95 RON ⁽⁰³⁾	Diesel ⁽⁰⁴⁾	Diesel ⁽⁰⁴⁾
	Fuel tank capacity, galls/ltrs	TBA	TBA	TBA	TBA	TBA	
	Official fuel consumption, mpg/ltr per 100 km ⁽⁰⁵⁾ – manual gearbox						
	Urban	TBA	30.4/9.3	25.4/11.1	42.2/6.7	38.7/7.3	
	Extra-urban	TBA	48.7/5.8	44.8/6.3	61.4/4.6	57.6/4.9	
	Combined	TBA	39.8/7.1	34.9/8.1	53.3/5.3	48.7/5.8	
	Official fuel consumption, mpg/ltr per 100 km ⁽⁰⁵⁾ – automatic gearbox						
	Urban	TBA	–	–	37.2/7.6	–	
	Extra-urban	TBA	–	–	56.5/5.0	–	
	Combined	TBA	–	–	47.9/5.9	–	
	Official CO ₂ emission, g/km ⁽⁰⁶⁾ – manual gearbox – automatic gearbox	TBA TBA	170 –	194 –	143 159	157 –	
	Emission class	TBA	EURO 4	EURO 4	EURO 4	EURO 4	
	Noise, dB – manual gearbox – automatic gearbox	TBA TBA	TBA –	TBA –	TBA TBA	TBA –	

† Where the law permits.

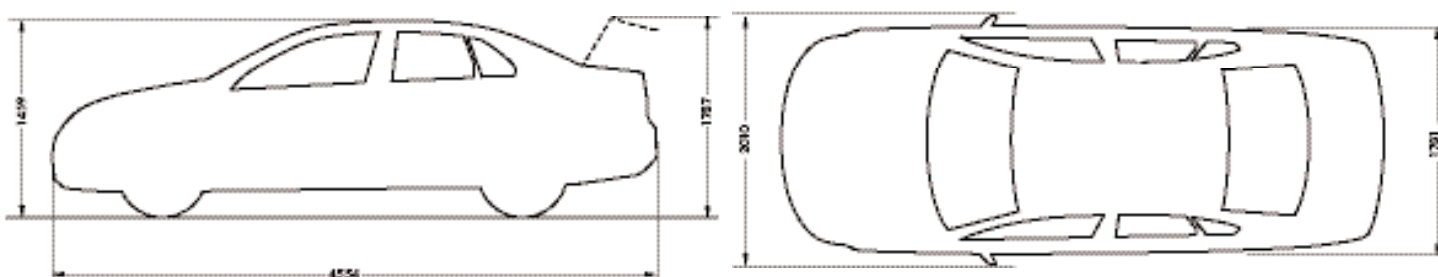
Technical specification notes.

- 01) Figures are calculated in accordance with manufacturer's criteria. Vehicle unladen weight ranges with 90% tank capacity without driver. The individual unladen weight depends on the specification of the vehicle, this then reduces the possible payload accordingly.
- 02) With increasing altitude the engine performance diminishes. From 1,000 m above sea level and for every 1,000 m thereafter 10% of the vehicle/trailer weight (trailer weight + gross vehicle weight) must be deducted.
- 03) Thanks to the knock control, unleaded four star (at least 95 RON) can be used instead of unleaded Super plus. In order to achieve maximum fuel consumption benefits on the FSI engine, Ultra Low Sulphur Petrol (ULSP) must be used.
- 04) The use of RME and FAME (bio diesel) is not possible.
- 05) Official fuel consumption according to EU Directive 99/94. The consumption calculation according to 1999/100/EC is based on the actual unladen weight of the vehicle. Additional specifications can lead to a higher weight class and hence to consumption figures of this higher weight class. The driving style, road and traffic conditions, environmental influences and vehicle condition can in practice lead to consumption figures, which may differ from those calculated with this standard.
- 06) The weight of a vehicle will influence the level of CO₂ emission it produces; as a result, vehicles with higher levels of specification and factory-fitted options may emit higher levels of CO₂. The CO₂ figure quoted for each vehicle is the maximum possible. The unladen weight of the vehicle is calculated by range at the time of manufacture and the maximum possible CO₂ emission for that weight range is applied according to the Council Directive 80/1268EEC as amended by Commission Directive 1999/100/EC on the approximation of the laws of the member states relating to the carbon dioxide emissions and the fuel consumption of motor vehicles.

Technical specification dimensions.

Maximum luggage capacity, litres VDA measuring method using 200 x 100 x 50 mm blocks	With rear seat upright	527
	With rear seat folded	TBA

Exterior dimensions	Length, mm	4554
	Width – including door mirrors, mm	2010
	Width – excluding door mirrors, mm	1781
	Width – opened front/rear doors, mm	3640/3435
	Height, mm	1459
	Height – opened bonnet/floor, mm	1763
	Height – opened tailgate/floor, mm	1787
Wheelbase, mm	2578	



All figures in millimetres.

The technology.

Engines

- Front transverse-installed engine
- 1.6 litre/102 bhp (75 kW) petrol engine:
TBA
- 1.6 litre/115 bhp (85 kW) petrol engine:
four cylinder in-line engine, aluminium cylinder head, four valves per cylinder with roller valve lever drive, electronic direct injection (FSI), programmed ignition with cylinder-selective anti-knock control, four single spark ignition coils, longlife spark plugs, exhaust gas recirculation, three-way front catalyst, NOx storage catalyst
- 2.0 litre/200 bhp (147 kW) petrol engine:
four cylinder in-line engine, aluminium cylinder head, four valves per cylinder with roller rocker finger valve drive, electronic direct injection (FSI), variable inlet valve timing, programmed ignition with cylinder-selective anti-knock control, four single spark ignition coils, longlife spark plugs, exhaust gas turbocharger, three-way close-coupled pre-catalyst and underbody catalyst, lambda control
- 1.9 litre/105 bhp (77 kW) diesel engine:
four cylinder in-line engine, two valves per cylinder, electronically controlled 'Pumpe Düse' high pressure injection system, oxidation catalyst, turbocharger with variable turbine geometry
- 2.0 litre/140 bhp (103 kW) diesel engine:
four cylinder in-line engine, four valves per cylinder, electronically controlled direct injection with pump injector unit, oil cooler, intercooler, exhaust gas recirculation, oxidation catalyst, turbocharger with variable turbine geometry

Transmission

- Front wheel drive through asbestos-free single-plate dry clutch. Hydraulic clutch-mechanism. Five/six speed manual gearbox with double joint half axles
- Five speed manual: 1.6 litre 102 bhp, 1.9 litre TDI 105 bhp
- Six speed manual: 1.6 litre FSI 115 bhp, 2.0 litre FSI 200 bhp, 2.0 litre TDI 140 bhp
- Six speed automatic: 1.9 litre TDI 105 bhp

Running gear

- Front suspension through coil springs with telescopic shock absorbers, all elements integrated in chassis legs
- Rear suspension with gas pressure shock absorbers and separate springs
- Wheel control: front through chassis legs and (lower) triangular wishbones (directionally stabilising steering roll radius)
- Wheel control: rear through four-link suspension with independent wheel suspension
- Front and rear anti-roll bar

Steering

- Electro-mechanical steering rack
- Collapsible, height and lengthways adjustable safety steering column

Brakes

- Electronically controlled Anti-lock Braking System (ABS) with Electronic Brake-pressure Distribution (EBD) and Traction Control (ASR)
- Diagonal twin-circuit brake system with inner-ventilated front disc brakes and rear disc brakes
- Asbestos-free brake pads
- Hydraulic Brake Assist (HBA)

Volkswagen service for your peace of mind.

The Volkswagen Warranty.

Two-year Warranty.

All Volkswagen new Jettas now come with a two-year unlimited mileage warranty which protects your car against the failure of most mechanical and electrical components due to manufacturing defects.

This warranty cover is subject to the car being serviced and maintained at an authorised Volkswagen dealer according to the manufacturer's recommendations. Failure to do so will invalidate this warranty.

Three-year Paint Warranty.

The paintwork of the new Jetta is covered against manufacturing defects for a period of three years. Naturally, the new Jetta must be cared for in compliance with the operating instructions which will be found in your vehicle handbook. Please consult your Volkswagen dealer for full warranty details.

12-year Body Protection Warranty.

The internal body sections and panels of the new Jetta are covered against rusting through from the inside for a period of 12 years. Naturally, the new Jetta must be cared for in compliance with the operating instructions. Please consult your Volkswagen dealer for full warranty details.

Service Intervals for Petrol and Diesel Engines.

Full details of what checks and work are recommended at each service are contained in the Service Book and your dealer will be able to advise you of any particular requirements.

Approved Accessories.

A comprehensive range of accessories from alloy wheels to fitted floor mats is available to complement the factory-fitted option list.

Volkswagen Finance.

Volkswagen Finance offers a dedicated service to meet the needs of both the business user and the private motorist. We can help you choose the right type of finance and will tailor the package to meet your specific requirements. Please consult your Volkswagen dealer for details.

Volkswagen Assistance.

Every new car is registered for Volkswagen Assistance for 2 years. This provides vehicle recovery in the unlikely event of a breakdown (subject to conditions).

Volkswagen Rental.

For details, please contact your dealer.

CO₂ Emission.

The weight of a vehicle will influence the level of CO₂ emission it produces; as a result, vehicles with higher levels of specification and factory-fitted options may emit higher levels of CO₂.

The CO₂ figure quoted for each vehicle is the maximum possible. The unladen weight of the vehicle is calculated by range at the time of manufacture and the maximum possible CO₂ emission for that weight range is applied according to the Council Directive 80/1268EEC as amended by Commission Directive 1999/100/EC on the approximation of the laws of the member states relating to the carbon dioxide emissions and the fuel consumption of motor vehicles.

Please Note:

Certain models and items of equipment shown in this publication are not available in Ireland.

Some illustrations in this brochure do not necessarily reflect Irish specifications. Consequently, controls and some items of equipment are positioned differently for Ireland.

The specifications contained in this brochure are for information purposes only as we cannot confirm the exact specifications of the vehicles. If you require any specific feature, you must consult your Volkswagen dealer who is regularly updated with any change in specification. Please check model availability and full specification details with your Volkswagen dealer prior to ordering.